



Benton County residents cast votes in controversial race for sheriff

August 7, 2007 at 9:22 PM CDT - Updated June 30 at 5:00 PM

Election Day in Benton County meant a local fire department was a very busy place...not putting out fires, but serving as one of five county polling centers. Ballots in Benton County included a hot sheriff's race that has landed one candidate for the position behind bars.

"I think it's a disgrace!"

Clint Moffit wasn't talking Tuesday, but his mother was. Moffit was arrested last week, accused of voter fraud, and hiring at least nine others to go around the county offering cash for votes.

"We are still trying to win an election," she said. "We're out here trying to get an election won."

Investigators with the Mississippi State Police monitored elections all day in Benton County, keeping an eye on the election process and an ear out for any complaints.

Moffitt supporters said the candidate is being set up, and that this is just another case of what they called "dirty Benton County politics."

Moffitt's opponent, incumbent Sheriff Arnie McMullen, was not available for comment.

[Click here](#)

to email Syan Rhodes.



Top Articles



Medicare Advantage

ChooseCigna

dicare.com

Benefits vary by plan and service area. Contact the plan for details and availability of these services. You must reside in the plan service area. Cigna is contracted with Medicare for PDP plans, HMO and PPO in select states, and with select State Medicaid programs. Enrollment in Cigna depends on contract renewal. Free guide without the obligation to enroll. Y0036_21_87822_M ©2020 Cigna

READ MORE

10p headlines

Sponsored Stories



Elmhurst Dems: Donate to Flip the Senate

Paid for by DSCC



How to order DoorDash without paying DoorDash prices

Wikibuy



Blake Shelton And Gwen Stefani Make Exciting Announcement

Creat8 Media



Celebrity Trainer: "I Feel Better At 60 Than I Did At 40, Thanks To These..."

Power Life by Tony Horton

LIMITED TIME OFFER

Get the full business story.

for just \$1.99 per month

Bloomberg.com

Bloomberg.com For Only \$1.99

Bloomberg.com



Plastic Surgeon Tells: Doing This Every Morning Can Snap...

innerskinresearch.com



Elmhurst, Illinois: Notice For Cars Used Less Than 50 Miles A Day

autoinsurance.com



The New Volvo XC90 Is Dropping Jaws!

Auto Life | Sponsored Listings

Recommended For You



Ole Miss addresses concerned parents

Best Life: Why more women are being diagnosed with Alzheimer's

Sponsored Content

- **Quick Poll for Elmhurst Dems: Do You Approve of President Trump?** Paid for by Democratic Governors Association
- **Dr. Ron Paul: "Here's What I Think Is Coming Next for America"** Stansberry Research
- **How To Wipe Dark Spots From Your Face (or Neck or Hands)** darkspotfix.com
- **Alleviate Embarrassing Toenail Fungus Naturally & Protect Your Health & Vitality** Fungus Eliminator
- **Blissy is truly a game-changer!** Blissy

We Recommend

- **Council looks to limit car lots, tire shops, and gas stations on Lamar**
- **Florida Gators' game against LSU has been postponed**
- **Daughters of 'Hotel Rwanda' hero fear for his life**
- **GOP Sen. Sasse berates Trump in leaked call**
- **WATCH: Belmont University officials preview final presidential debate**



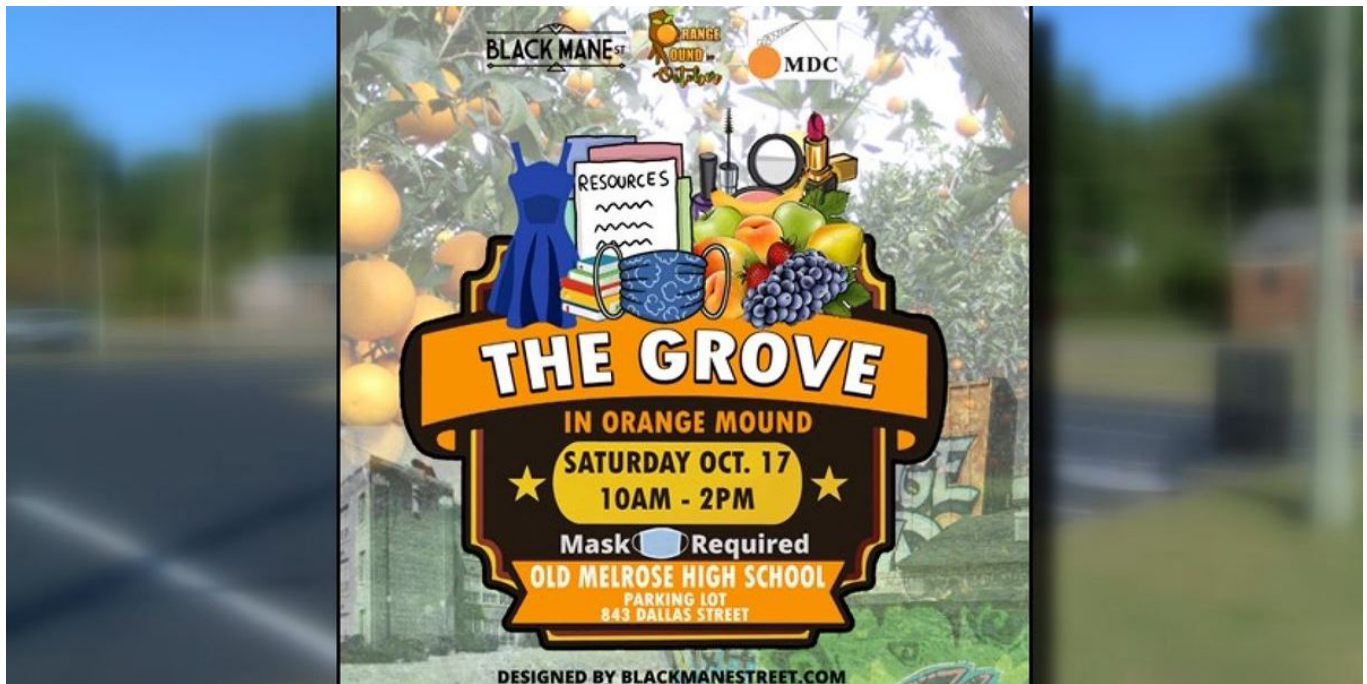
63°

**Currently in
Memphis, TN**

FULL FORECAST

Sponsored By

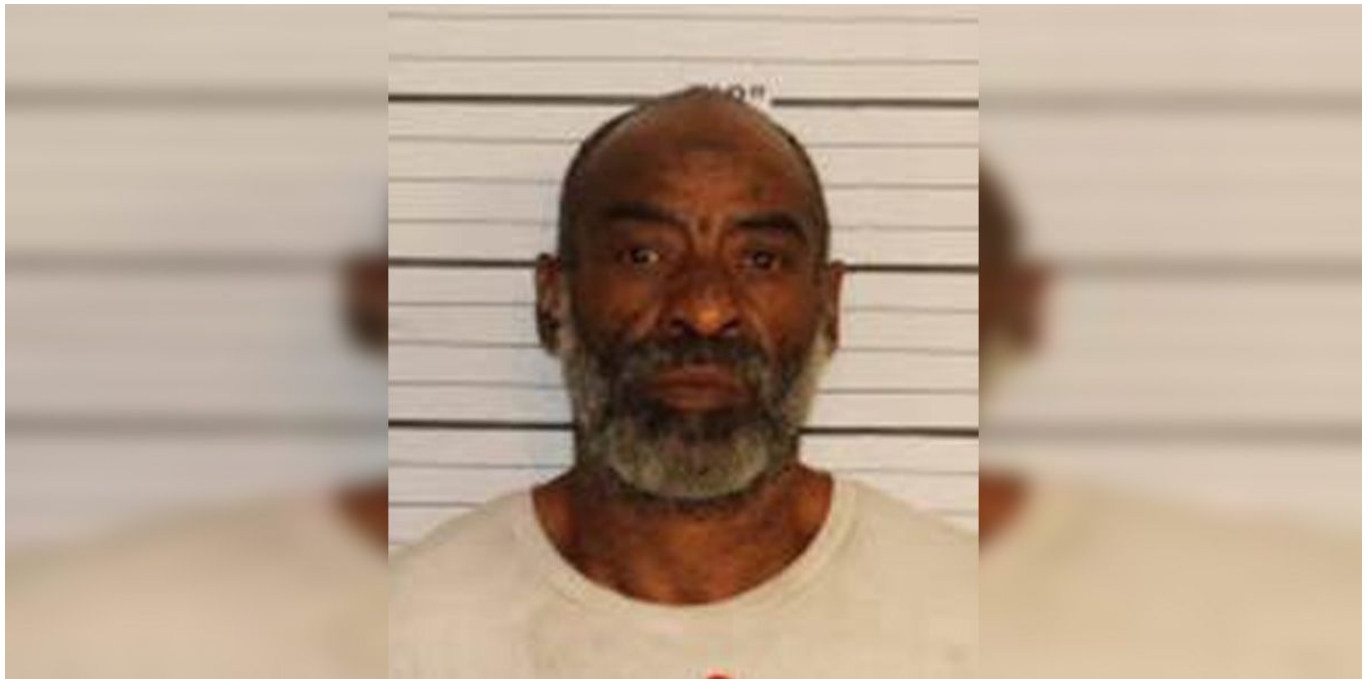
RECENT CONTENT



▶ New Orange Mound project to highlight Black-owned businesses

The Grove in Orange Mound kicks off Saturday, Oct. 17 at 10 a.m. at 843 Dallas St.

By **Camille Connor**



Investigators: Surveillance footage catches man taking gun from scene of fatal shooting

A Memphis man is sitting in the county jail after investigators say he took a gun from the scene of a fatal shooting.

By **WMCActionNews5.com Staff**

Canceled 901 Fair Food Fest rescheduled to happen in Southaven

Published 2h at 11:37 AM



COVID-19 in Mississippi: 109,255 cases, 3,160 deaths reported by health dept.

Published 2h at 11:25 AM



Health department reports 250 new COVID-19 cases in Shelby County

Published 3h at 10:32 AM

Healthcare Resource Tracking System (HRTS)
Data – as of 5:00 p.m. 10/15/2020

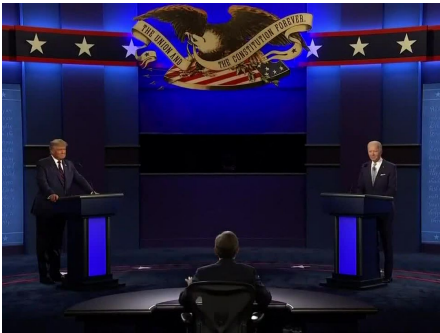
Regional Facility	Current Census	Currently Available Beds	*Utilization %	Mid-South Regional Hospital Resource Report	Current Census	Currently Available Resources
Memorial	2216	241	90%	Negative Pressure Rooms	205	278
Positive	139		6%	Vents (All Types)	305	391
ICU	14		1%	COVID Positive	37	
ICU	380	34	82%	PUI	1	
ICU	66		17% ^A			
ICU	3		1%			

*Utilization. Data is reflective of all hospital facilities located within Shelby, Lauderdale, and Leflore Counties in TN; Crittenden County in AR; and DeSoto County in MS. PUI data above does not include VA. *ICU is account for patient beds/patient use (census), unstaffed beds, and available beds/resources.

Less than 80% utilization
80-90% utilization
More than 90% utilization

Belmont University officials discuss preparations for final presidential debate

Published 3h at 10:25 AM





1960 Union Avenue
Memphis, TN 38104
(901) 726-0555

CONTACT US ►

FCC PUBLIC FILE
PUBLICFILE@WMCTV.COM
(901) 726-0501
EEO REPORT
CLOSED CAPTIONING
PRIVACY POLICY
TERMS OF SERVICE



A Gray Media Group, Inc. Station - © 2002-2020 Gray Television, Inc.

